

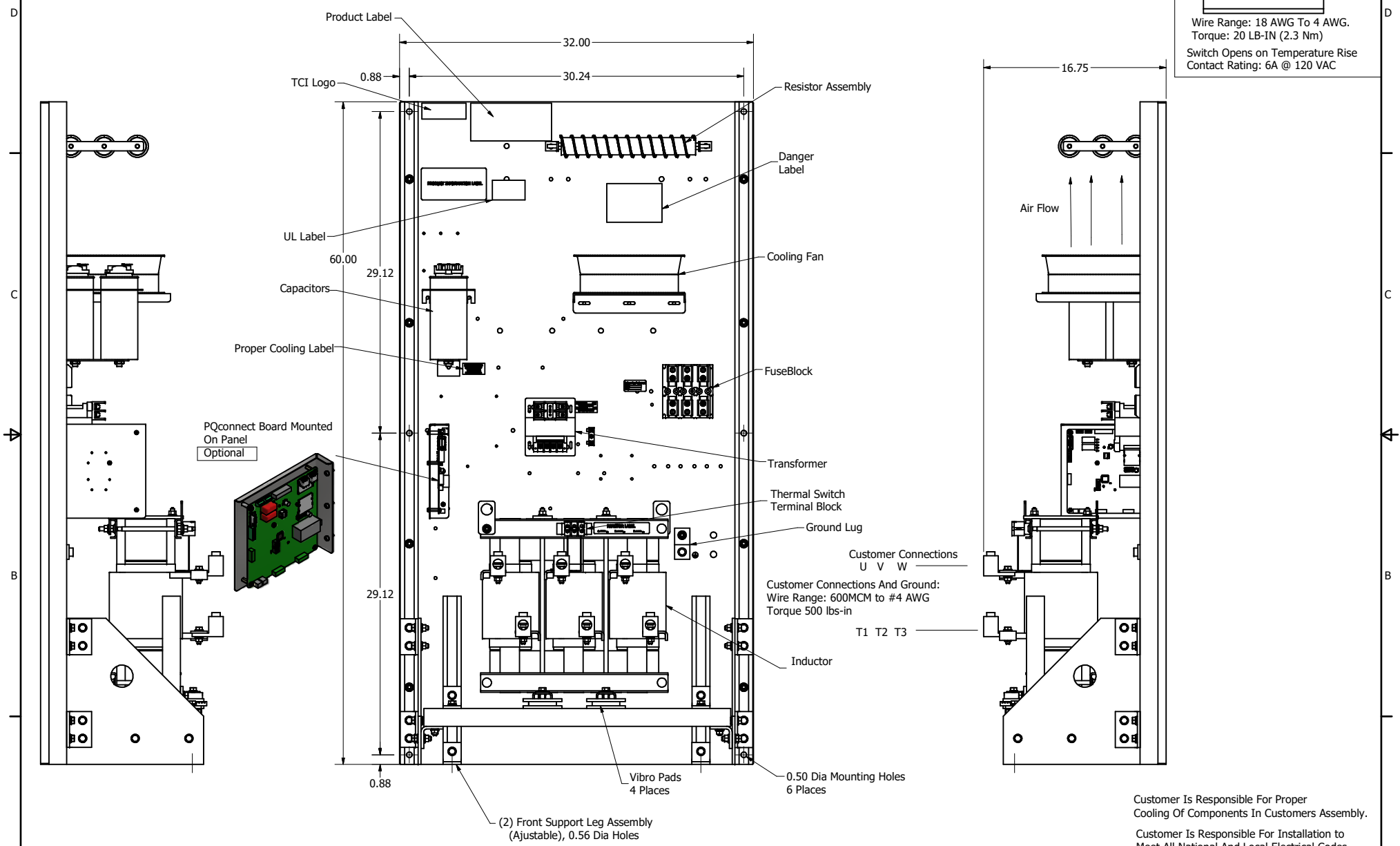
SineWave Part Number	Schematic Drawing#	Approx Weight (LBS)
KMG305A00A	24281-3A	460
KMG305A00P	24281-3P	465

HorsePower (HP)	kVar	Max Amps	Voltage (V)	HZ	Phase
250	20	305	480	60	3

1

Thermal Switch Terminal Block

Wire Range: 18 AWG To 4 AWG.  
Torque: 20 LB-IN (2.3 Nm)  
Switch Opens on Temperature Rise  
Contact Rating: 6A @ 120 VAC



Customer Is Responsible For Proper Cooling Of Components In Customers Assembly.

Customer Is Responsible For Installation to Meet All National And Local Electrical Codes.

Material(s) Shall be RoHS Compliant

TCI, LLC CLAIMS PROPRIETARY RIGHTS IN THE MATERIAL HEREIN DISCLOSED. IT IS SUPPLIED WITHOUT PREJUDICE TO ANY PATENT RIGHTS OF TCI AND MAY NOT BE REPRODUCED OR USED TO MANUFACTURE ANYTHING SHOWN THEREIN WITHOUT WRITTEN PERMISSION FROM TCI.					TOLERANCES (EXCEPT AS NOTED) DECIMAL .XX ± .25 .XXX ± .10	<b>TCI</b> W132 N10611 Grant Drive Germantown, WI 53022  KMG305A000- SineWave Filter Open Panel, 250HP, 480V	
					FRACTIONAL ± 1/16		
	B	Add PQconnect Board	9/9/2020	DSW			DRN BY: DSW DATE: 10/07/2014 SCALE: 1/5 FILE:
	NO	REVISION	DATE	BY	± 1°		104341DG SHEET 1 OF 1

D  
C  
B  
A

D  
C  
B  
A